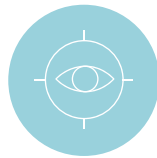


KEPLER LOUPES

These binocular loupes with Kepler optics are designed for higher magnification, which is especially useful in procedures that require maximum detail discrimination, such as endodontics and microsurgery.



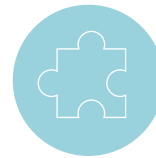
CUSTOMIZABLE



HIGH
PRECISION



LIGHTWEIGHT



EASY
ADAPTATION

Binocular with **Kepler** optical design for **maximum detail** images


Extra lightweight titanium frame

Polycarbonate lenses with **anti-reflective** coating for greater **durability** and a **premium image**



Manufactured by Admetec with high-quality components in collaboration with FUJITOK® Corporation, Japan, one of the leading **precision lens** suppliers.*

All our loupes are designed according to each professional's individual characteristics, based on an ergonomic study and optical measurements carried out by an expert team, following the protocols developed by Vittrea.

Magnification	Working distance (mm)	Visual field (mm)	Depth of field (mm)	 Frame included
4x	350 • 400 • 450	65 • 75 • 85	60 • 70 • 80	56 g
4,8x	350 • 400 • 450	55 • 62 • 70	50 • 60 • 70	57 g
5,5x	350 • 400 • 450	46 • 50 • 55	40 • 50 • 60	58 g

*FUJITOK lenses are used in optical instruments, digital cameras, microscopes, astronomical devices, and medical applications for some of the world's largest companies, including Hoya, Canon, Olympus, Nikon, and Sony.